

Independent Living

Independent Living residences feature apartment-style living with amenities and services including social activities, at least one meal a day, housekeeping, and transportation. Residents live in an active social setting with common dining areas and activity spaces.

Independent Living residences are available in studios, 1-bedroom, and 2-bedroom apartments located in new buildings.

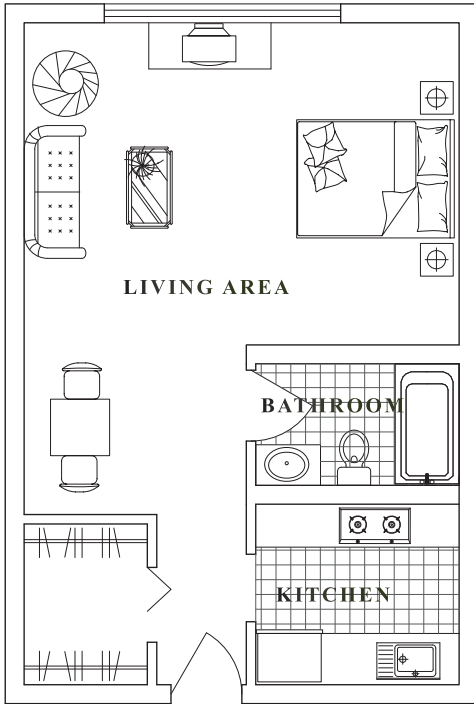
Primary Services

- One well-balanced meal served daily, featuring a variety of menu choices
- Snacks available throughout the day
- Meal credits available to use for guests
- Housekeeping services
- Weekly linen service
- Valet service
- Maintenance and repairs
- Daily scheduled transportation for shopping, planned group outings, and off-site medical appointments
- Social events and activities
- 24-hour reception desk
- Trained staff
- Monthly wellness visits by a licensed nurse
- 24-hour security surveillance

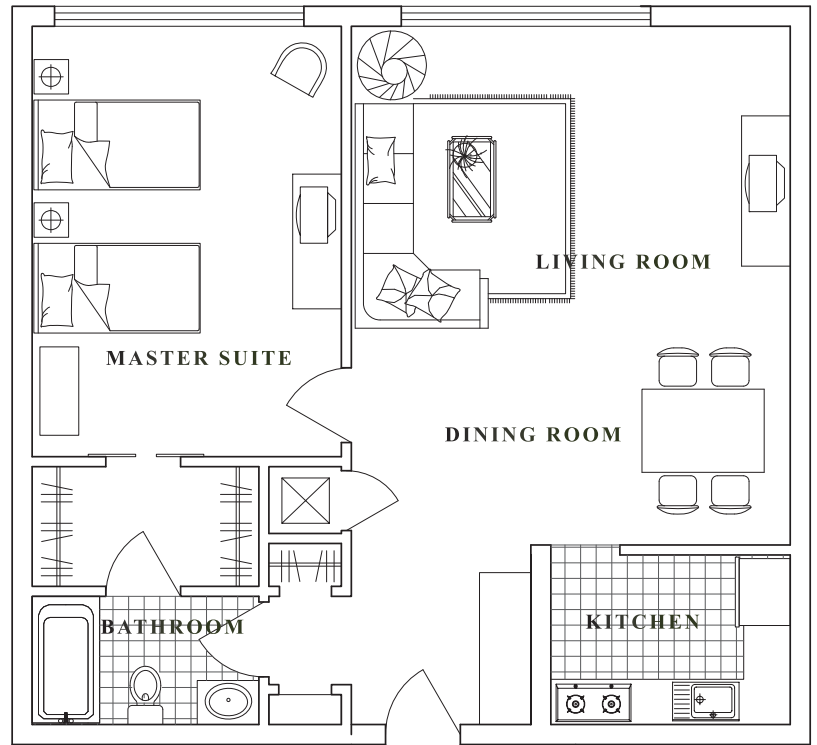
Availability of Units

Early 2008

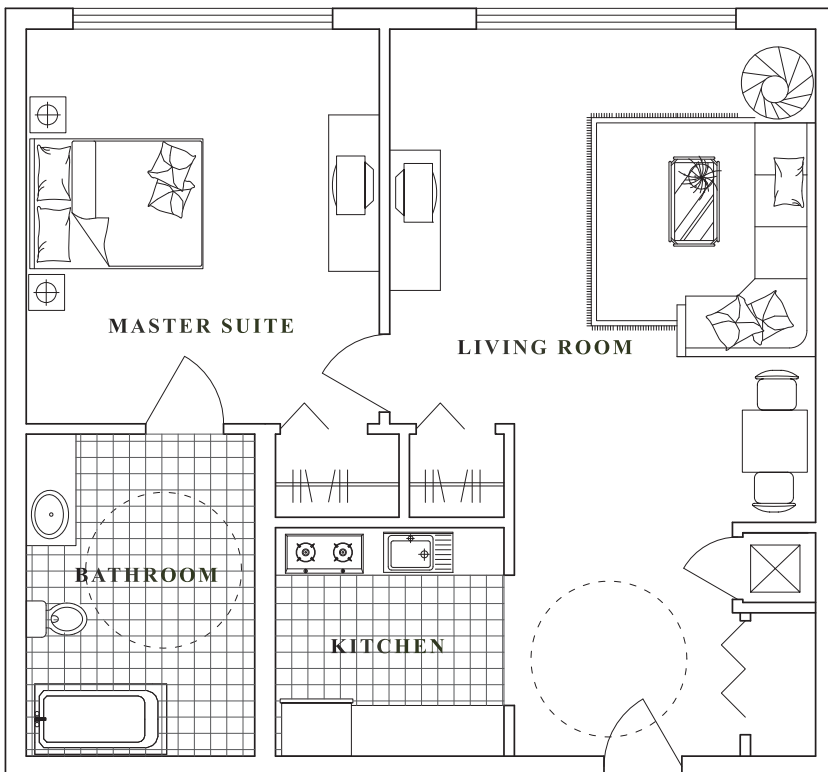
STUDIO - 560 SF



1 BEDROOM, 1 BATH - 620 SF



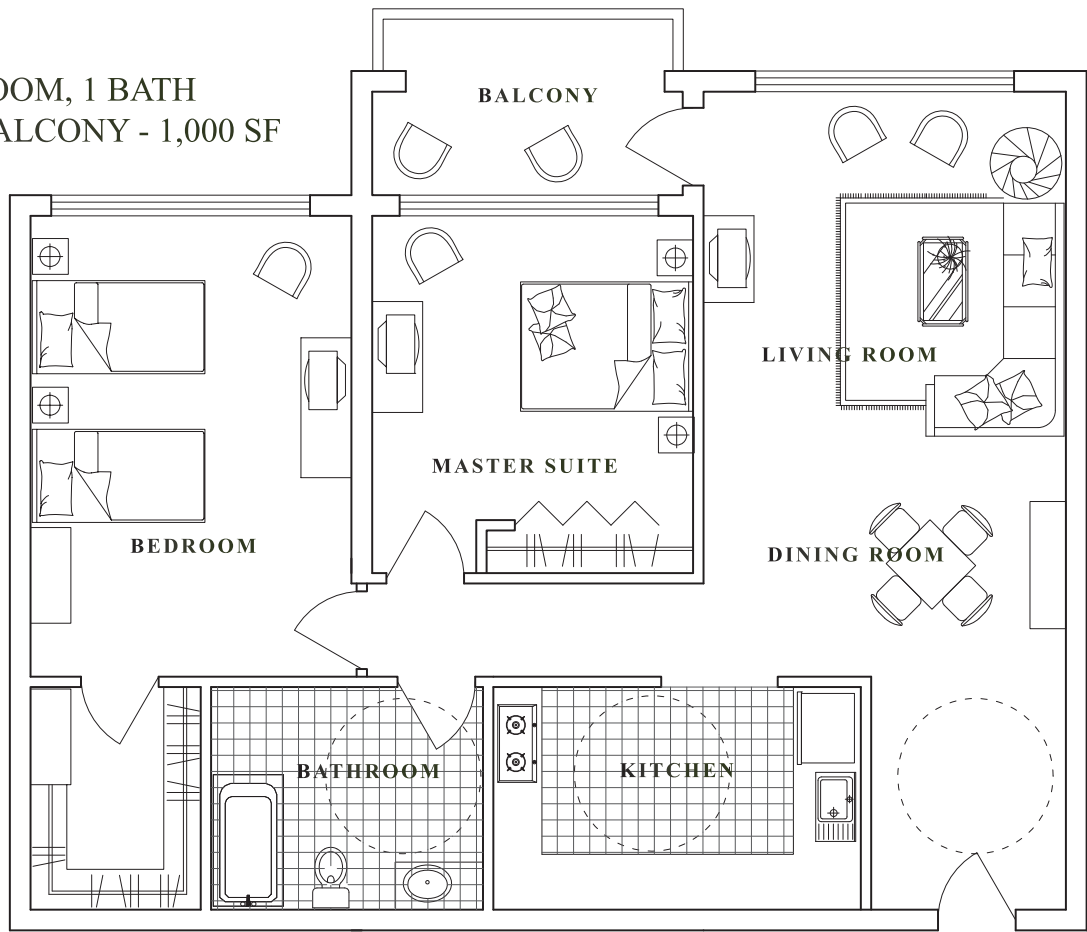
1 BEDROOM, 1 BATH - 670 SF



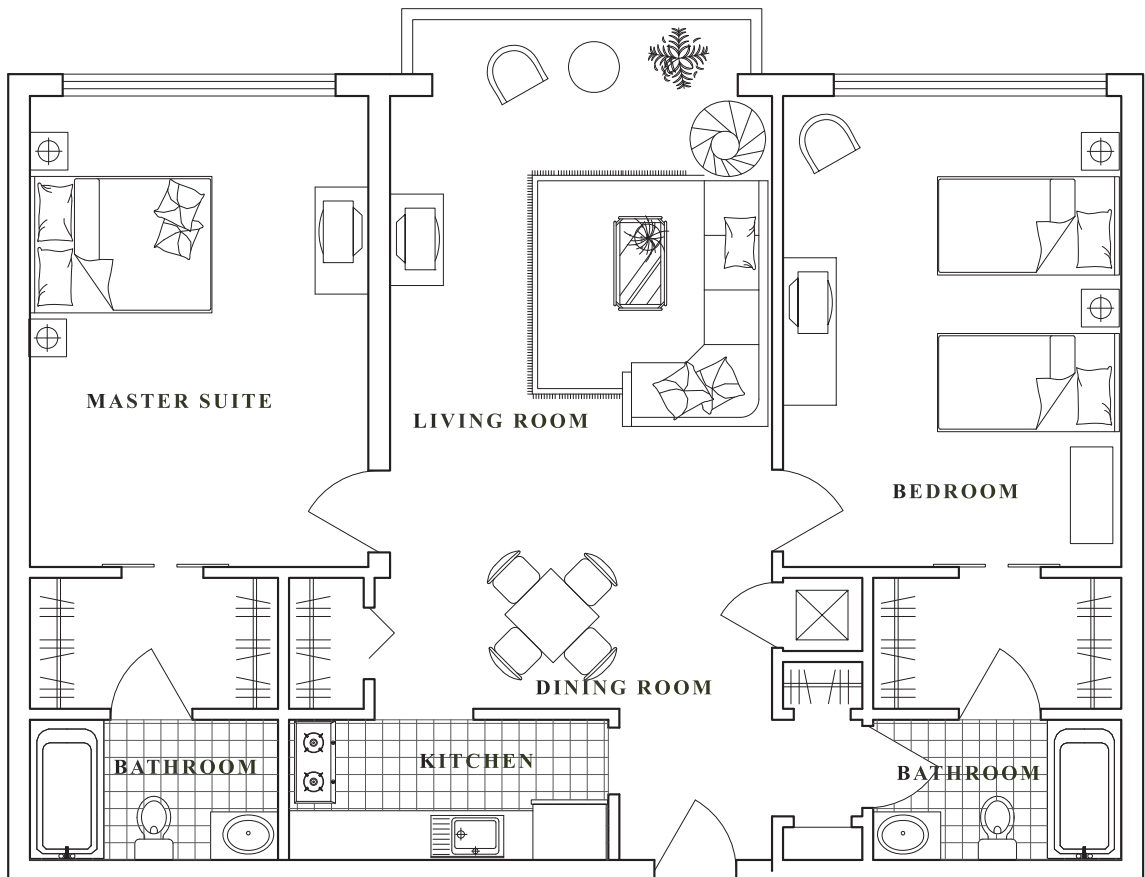
Independent Living Amenities:

- Wall-to-wall carpeting
- Safety handrails in tubs and showers
- Individually controlled heating and air conditioning
- Emergency call response system
- Fire safety system
- Fully equipped kitchen
- Cable television, telephone, and internet service
- Elevators in buildings
- Variety of comfortable community areas including:
 - Common dining room
 - Media, television, and living room areas
- Convenient parking space

2 BEDROOM, 1 BATH
WITH BALCONY - 1,000 SF



2 BEDROOM, 2 BATH - 1,050 SF





Fee Schedule: Independent Living

MONTHLY RENTAL FEE

<u>Type</u>	<u>Unit Size</u>	<u>Monthly Rent</u>
Studio	From 560 gsf	Starting at \$1,515
1-Bedroom	From 620 gsf	Starting at \$1,945
2-Bedroom	From 1,000 gsf	Starting at \$2,690

ONE-TIME FEES

Security Deposit:

First and last month's rent.

Community Fee:

Paid prior to move-in by residents excluding respite stays (temporary relief for caregivers). This fee covers the cost of preparing your rental unit prior to move-in and maintaining the community areas, including dining rooms, activity rooms, and other common areas. This is a one-time non-refundable fee.

Single: \$550

Couples: \$1,000

Pet Fee:

\$500 (non-refundable/per pet)

MONTHLY SERVICE FEE

Monthly service fee includes electricity, water, cable TV, telephone, and internet. The amount of the fee will be provided prior to final selection of unit.

Information is subject to change depending on actual date of occupancy. Floor plan layouts and square footage are approximate, and will be verified prior to lease signing.