



# Assisted Living

Assisted Living residences are designed for those who desire more assistance or have limited mobility. The residences allow a high degree of individual freedom while routinely providing for supervision of medications, assistance with daily living activities, and treatment for minor situations. Residents live in a safe, comfortable environment that serves as a link between fully independent living and nursing home care.

## Primary Services

- Three well-balanced meals served daily, featuring a variety of menu choices
- Special diets as ordered by physician
- Snacks available throughout the day
- Housekeeping services
- Weekly personal laundry service (except dry cleaning)
- Valet service
- Maintenance and repairs
- Daily scheduled transportation for shopping, planned group outings, and off-site medical appointments
- Afternoon socials
- 24-hour reception desk
- Trained staff
- Monthly wellness visits by a licensed nurse
- 24-hour security surveillance
- Meal credits available to use for guests
- Alzheimer’s care available

## Personalized Services and Assistance

Prior to move-in, an assessment will be conducted for each resident to determine their unique preferences and need for assistance and support in the following areas:

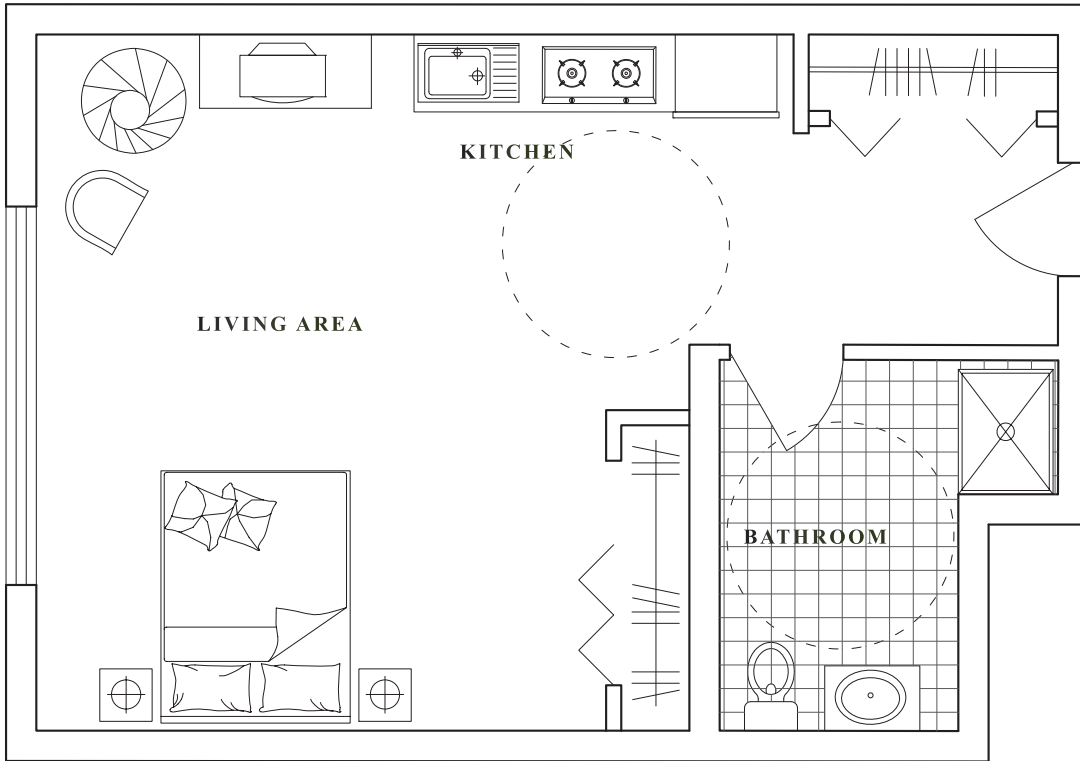
- Personal hygiene and grooming
- Showering or bathing
- Dressing and clothing selection
- Socialization and activities
- Mobility and transferring
- Continence management
- Monitoring of safety
- Assistance with eating
- Medication ordering, managing, and administering

Upon completion of the assessment, our designated care manager will prepare an individualized service plan that is monitored on a daily basis.

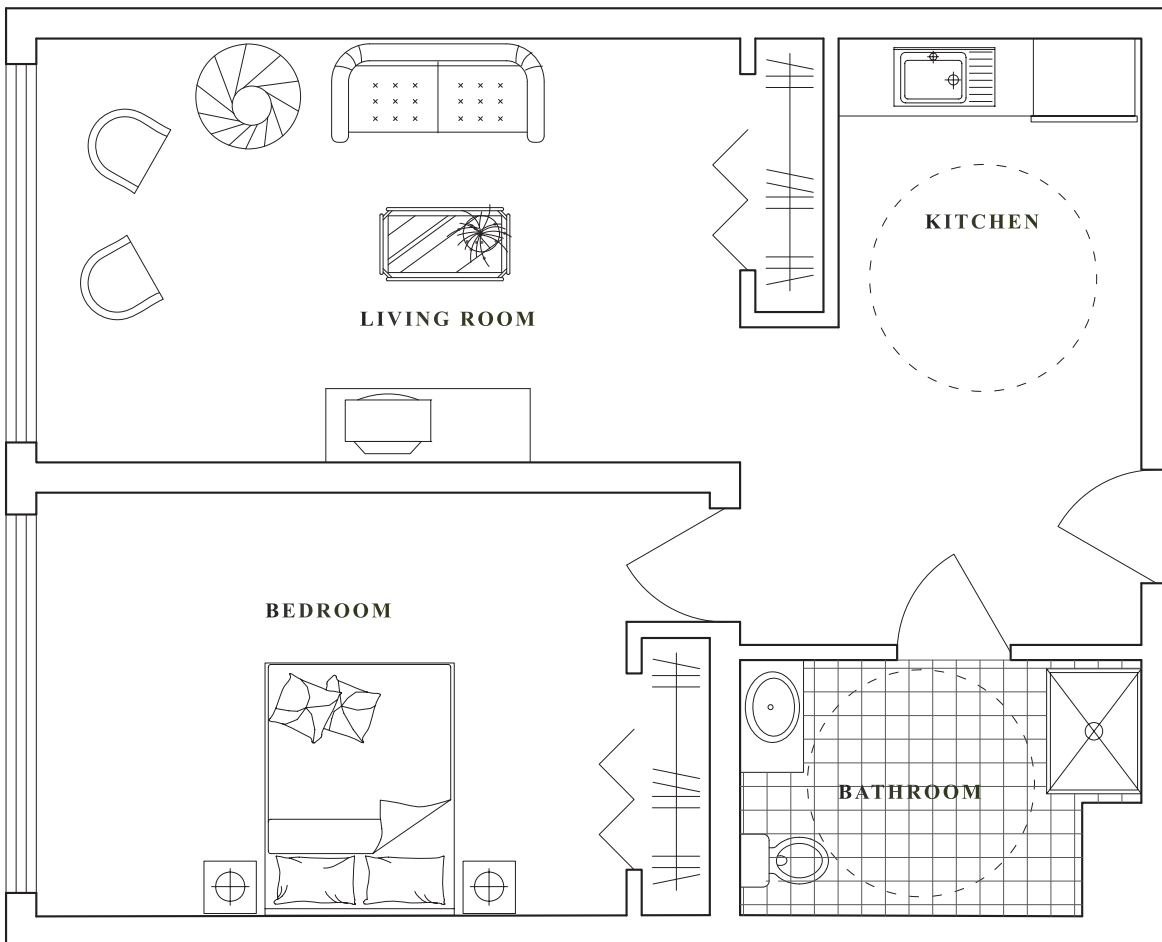
Availability of Units

Early 2008

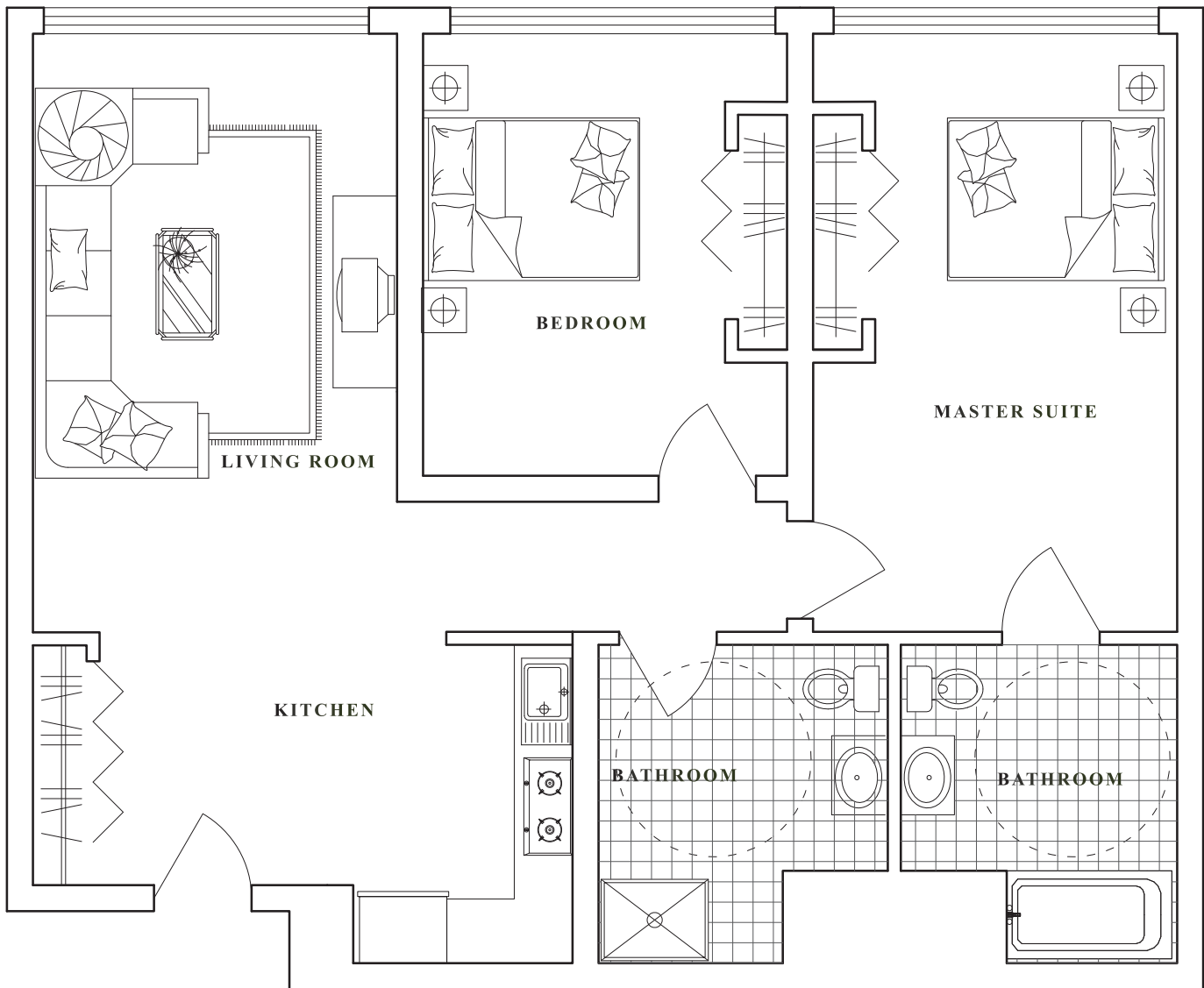
STUDIO - 650 SF



1 BEDROOM, 1 BATH - 795 SF



## 2 BEDROOM, 2 BATH - 1,050 SF



### Assisted Living Amenities:

- Wall-to-wall carpeting
- Safety handrails in tubs and showers
- Individually controlled heating and air conditioning
- Emergency call response system
- Fire safety system
- Fully equipped kitchen
- Cable television, telephone, and internet service
- Elevators in buildings
- Variety of comfortable community areas including:
  - Common dining room
  - Media, television, and living room areas
- Convenient parking space

---

---

---

---

---

ONE-TIME FEES

Security Deposit: First and last month's rent.

Community Fee:

Paid prior to move-in by residents excluding respite stays (temporary relief for caregivers). This fee covers the cost of preparing your rental unit prior to move-in and maintaining the community areas, including dining rooms, activity rooms, and other common areas. This is a one-time non-refundable fee.

Single: \$550

Couples: \$1,000

Pet Fee: \$500 (non-refundable/per pet)

MONTHLY SERVICE FEE